

**LA PALLINA SP**  
Design OLEV Design Lab

- **VETRO SOFFIATO OPALINO**
- **INCISIONI GODRONATE**
- **VERNICIATO A LIQUIDO A MANO**

OPAL BLOWN GLASS  
KNURLED ENGRAVINGS  
LIQUID PAINTED BY HAND

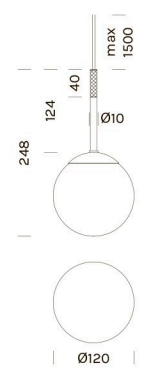




### LA PALLINA SP

Alluminio, vetro soffiato opalino  
Fascio di luce diffuso

Aluminum, opal blown glass  
Light beam: diffused



## LA PALLINA AP

Design Beppe Tizian

Registered Design

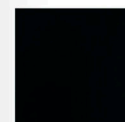
PARETE - WALL



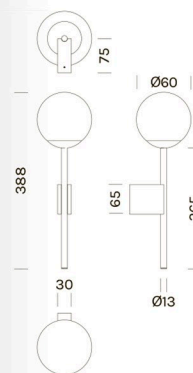
## LA PALLINA AP

Alluminio e vetro  
Fascio di luce diffuso

Aluminum and glass  
Light beam: diffused



NO



La Pallina Ap è una lampada da parete con diffusore sferico in vetro soffiato opalino, per un fascio luminoso ampio e confortevole.

La Pallina is a wall lamp with spherical diffuser in opal blown glass, for a wide and comfortable light beam.



**LA PALLINA**  
Design Massimo Broglio

*Registered Design*



- **DESIGN MINIMALE**
- **LUCE DIFFUSA E DIMMERABILE**
- **CONTROLLO CON SISTEMA TOUCH**

MINIMAL DESIGN  
DIFFUSED AND DIMMABLE LIGHT  
TOUCH-SENSITIVE CONTROL

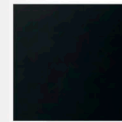




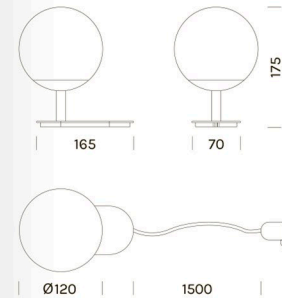
## LA PALLINA

Alluminio e vetro  
Fascio di luce diffuso  
Touch dimmer

Aluminum and glass  
Light beam: diffused  
Dimmer touch



NA



La Pallina è una lampada da tavolo con diffusore sferico in vetro soffiato opalino, per un fascio luminoso ampio e confortevole. La base, in alluminio fresato anodizzato, integra il comando touch per accensione, spegnimento e dimmerazione.

La Pallina is a table lamp with spherical diffuser in opal blown glass, for a wide and comfortable light beam. The base, made of milled anodized aluminium, integrates the touch control for switching on, off and for dimming.



# LA PALLINA TRACK 48V

Design OLEV Design Lab



Alluminio e vetro soffiato opalino  
Fascio di luce diffuso

Aluminum and spherical diffuser in opal blown glass  
Light beam: diffused



NO

